

CONTROL CABLES – INQUIRY FORM



Company:*

Contact person:*

Phone:*

E-mail:*

Date:

Comment:

* Required

	Cable		Controller		Mold		Length	Qty
Code	<input type="text"/>	-	<input type="text"/>	<input type="text"/>	<input type="text"/>	-	<input type="text"/>	<input type="text"/>
	Cable		Controller		Mold		Length	Qty
Code	<input type="text"/>	-	<input type="text"/>	<input type="text"/>	<input type="text"/>	-	<input type="text"/>	<input type="text"/>
	Cable		Controller		Mold		Length	Qty
Code	<input type="text"/>	-	<input type="text"/>	<input type="text"/>	<input type="text"/>	-	<input type="text"/>	<input type="text"/>
	Cable		Controller		Mold		Length	Qty
Code	<input type="text"/>	-	<input type="text"/>	<input type="text"/>	<input type="text"/>	-	<input type="text"/>	<input type="text"/>

Comment:

EXAMPLE

	Cable		Controller				Mold			Length			
Code	K	-	D	M	24	01	-	T	F	16	02	-	1
	Cable		Hood entry	Insert	Contacts	Wiring diagram		Hoodv entry	Insert	Contacts	Wiring diagram		Length
	K - combined		E - side, for 2 levers	M - male	06	01		E - side, for 2 levers	M - male	06	01		0,5 - 6 m
	P - power			F - female	10	02			F - female	10	02		
	T - T/C		U - top, for 2 levers		16	03		U - top, for 2 levers		16	03		
	KS - combined FSU				24	04				24	04		
	PS - power FSU		D - side, for 1 lever			07		D - side, for 1 lever			07		
	TS - T/C FSU		T - top, for 1 lever			08		T - top, for 1 lever			08		
						10					10		

For more information see page 2 - 4

ORYCON HELPDESK

oryconeu@oryconeu.cz | +420 566 696 615

CONTROL CABLES – SPECIFICATION

CABLES

WITHOUT PROTECTION



K - combined



P - power



T - thermocouple

WITH STEEL CONDUIT - FSU



KS - T/C FSU



PS - power FSU



TS - T/C FSU

HOOD ENTRY



E - side, for 2 levers



U - top, for 2 levers



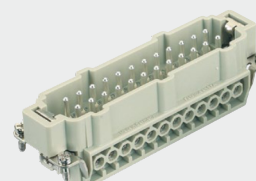
D - side, for 1 lever



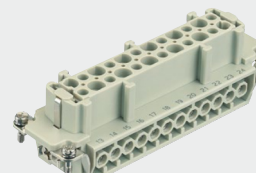
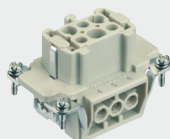
T - top, for 1 lever

INSERT / CONTACTS

M - male



F - female



06 - pins

10 - pins

16 - pins

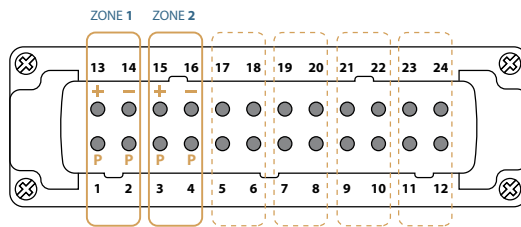
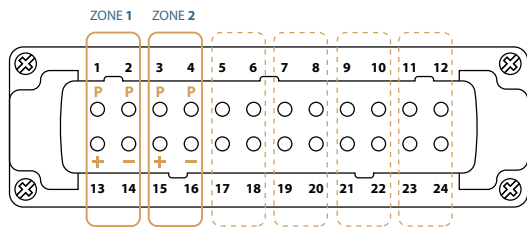
24 - pins

CONTROL CABLES – WIRING DIAGRAM

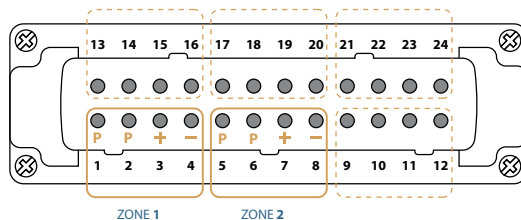
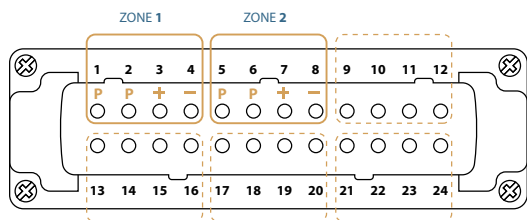
COMBINED - female

COMBINED - male

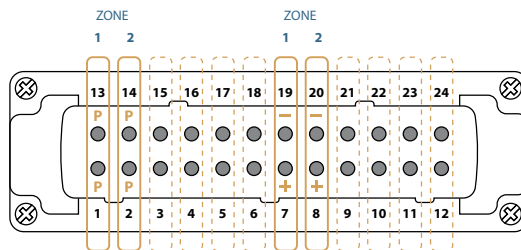
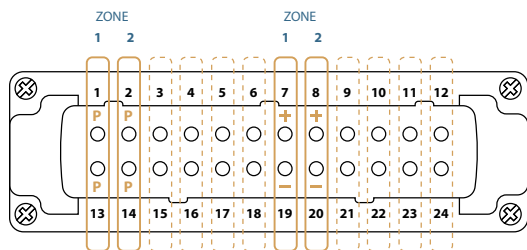
01



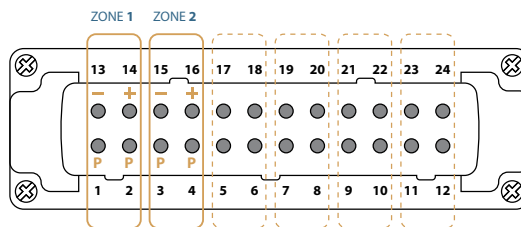
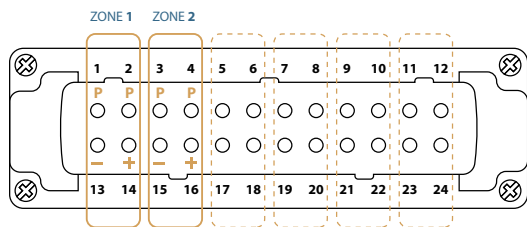
02



03



04



P POWER

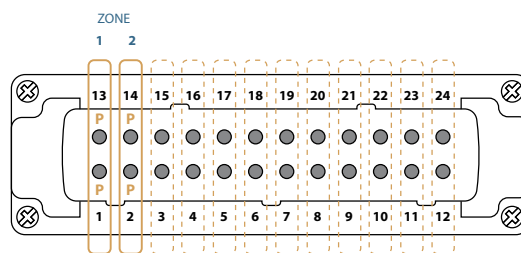
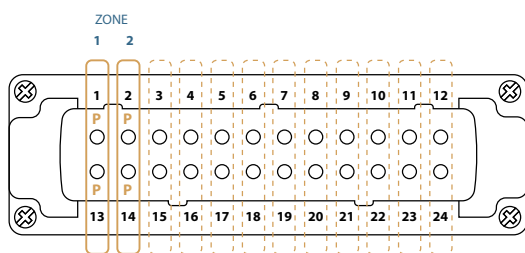
+ - THERMOCOUPLE

CONTROL CABLES – WIRING DIAGRAM

POWER - female

POWER - male

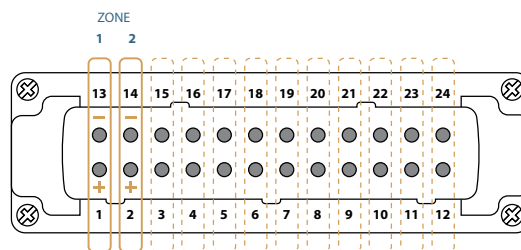
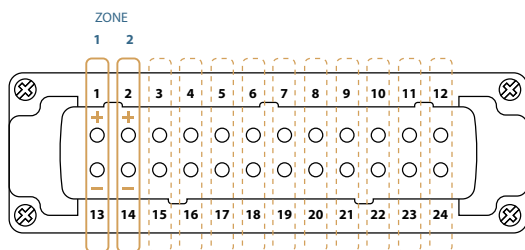
07



THERMOCOUPLE - female

THERMOCOUPLE - male

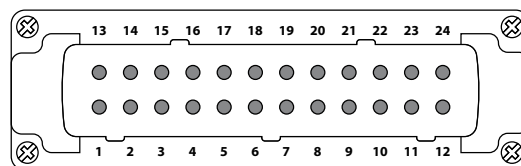
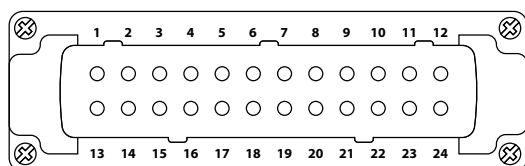
08



ATYP - female

ATYP - male

10



- P** POWER
- + -** THERMOCOUPLE



HOT RUNNER SYSTEMS

Orycon EU, a.s

Polnička 309
591 02 Žďár nad Sázavou

tel.: +420 566 696 615
e-mail: oryconeurope@oryconeurope.cz

www.oryconeurope.cz

Certification ISO 9001:2015